



57004 Slate Black, 57016 Vanilla Bean



Safety Zone™
Slip-Retardant Tile



57000 Earth Stone

How It Works

Safety Zone™ Tile is made with an embossed surface embedded with proprietary particles for exceptional slip-retardant performance, with colors and patterns that provide hiding power against scuffs, scratches, and abrasion.

No specialized maintenance required; follow traditional VCT maintenance protocols including the application of polish and periodic restorative maintenance.

- Fast Start® Factory Finish protects the tile during installation and makes initial maintenance quick and easy.
- Features through-pattern wear layer for lasting performance, even under heavy traffic conditions.
- Available in 12" x 12" format for modular flexibility.



Enhanced Traction for an Added Measure of Safety

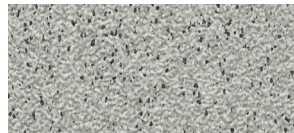
Healthcare, education, and retail facilities have an extraordinary responsibility to protect the health and well-being of occupants with an environment that is clean, comfortable, and safe. Safety Zone™ Tile Flooring is designed with this in mind, providing enhanced traction for an added measure of safety where it matters most.



57016 Vanilla Bean



57021 Neapolitan



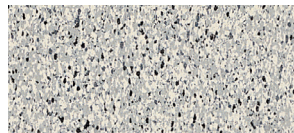
57023 Salt Water Taffy



57017 Cookie Dough



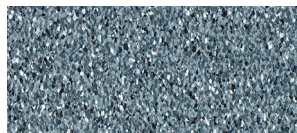
57000 Earth Stone



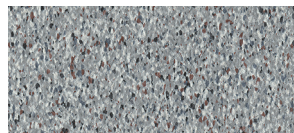
57001 Shale Gray



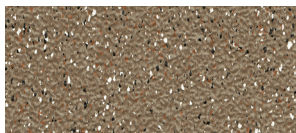
57018 Butter Pecan



57020 Blueberry Swirl



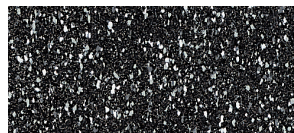
57022 Rocky Road



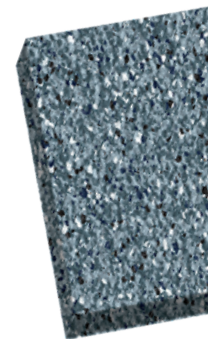
57019 Salted Caramel



57008 Soft Cedar



57004 Slate Black



1. Exclusive Fast Start® Factory Finish
2. Through-Color/Pattern Wear Layer

5 Year Commercial Limited Warranty

Supported by a 10 Year Commercial Limited Warranty. Add 10 years of overall warranty coverage by using Strong System™ subfloor preparation products. Visit ArmstrongFlooring.com for more information.

Product Information

Construction - Vinyl Composition Tile

International Specifications - ASTM F1066,
Class 2 Through Pattern

Overall Thickness - 1/8 in. (3.2 mm)

Wear Layer Thickness - 1/8 in. (3.2 mm)

Size - 12 in. x 12 in. (305 mm x 305 mm)

Factory Finish - Fast Start®

Installation - Adhesives: S-515, S-525

Maintenance Options - Polish

Shade may vary from sample.

ArmstrongFlooring™

Walk On. Walk Strong.™



Visit [ArmstrongFlooring.com](https://www.armstrongflooring.com)

for complete Product, Technical,
Adhesives, Installation and
Maintenance recommendations.

Print# AF-10250-124

Armstrong and the Armstrong logo are under license from AWI Licensing LLC. | All other trademarks are owned by AHF Licensing LLC. | © 2024 AHF Licensing LLC.
FloorScore® is a registered trademark of the Resilient Floor Covering Institute.